

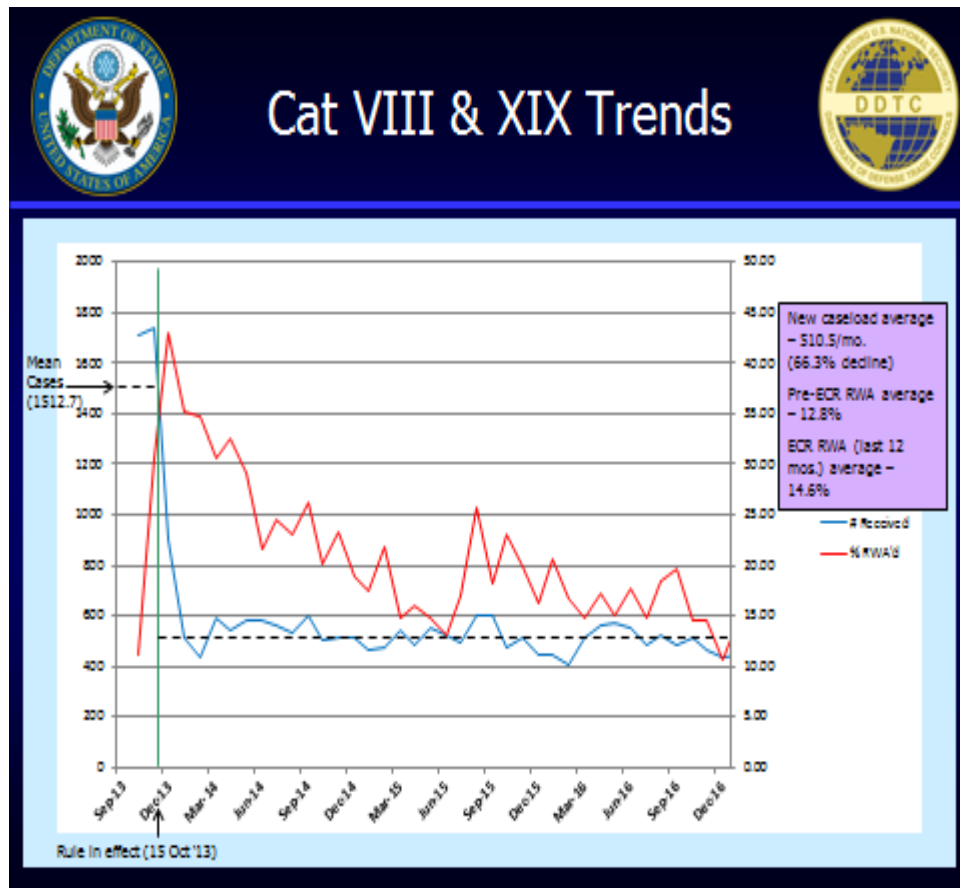
License Applications and U.S. Exports

The First Transition Rule

Aircraft and Gas Turbine Engines

October 15, 2013 to March 31, 2017

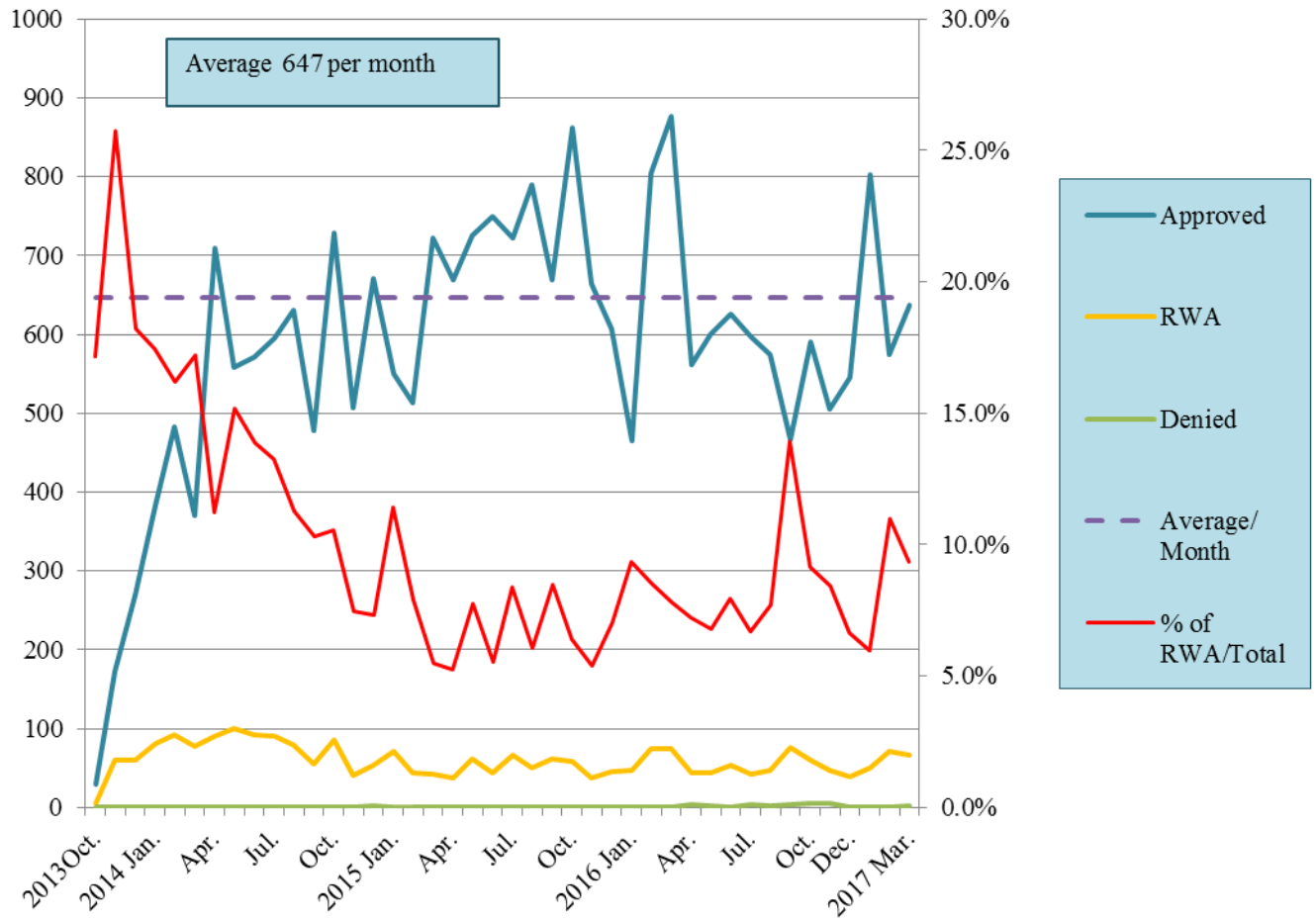
The license applications for items in categories VIII (Aircraft) and XIX (Gas Turbine Engines) of the United States Munitions List (USML) have declined 66.3% from an average of 1,513 to 511 per month through March 31, 2017. The average monthly drop of 1,002 in license applications is the result of certain items transitioning to the Commerce Control List (CCL) under Export Control Reform (ECR).



Source: The Directorate of Defense Trade Controls of the U.S. Department of State, April 2017

Since the First ECR Transition Rule became effective on October 15, 2013, the average number of BIS processed licenses for the ten 600-Series items created by this rule is 647 per month through March 31, 2017. The approval rate is 90.6%.

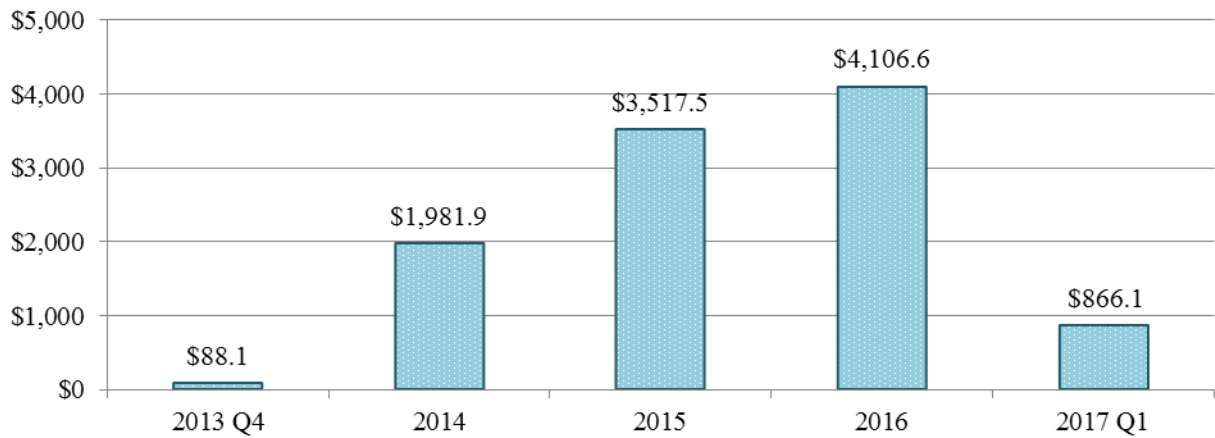
**BIS License Processing for the First ECR Transition Rule
October 15, 2013 to March 31, 2017**



Source: Commerce U.S. Exports Exporter Support System, July 2017.

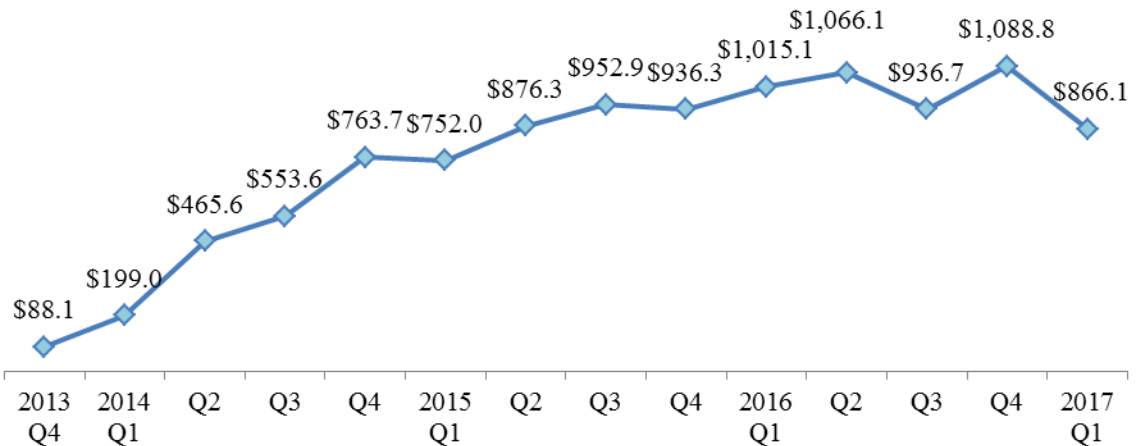
From October 15, 2013 to March 31, 2017, U.S. exports of items under the First ECR transition Rule – Aircraft and Gas Turbine Engines items (9x610 and 9y619) under BIS jurisdiction totaled 208,313 shipments for \$10.6 billion.

**U.S. Exports under the First ECR Transition Rule Items
under BIS Jurisdiction**
October 15, 2013 to March 31, 2017
\$million



Source: Automated Export System, July 2017

**U.S. Quarterly Exports of the First ECR Transition Rule Items under
BIS Jurisdiction**
October 15, 2013 to March 31, 2017
\$million



Source: Automated Export System, July 2017

The First Transition Rule-Aircraft and Gas Turbines Top 15 Destinations of U.S. Exports under BIS Jurisdiction October 15, 2013 to March 31, 2017				
Country	Shipment Count	% of Total Shipment Count	Value \$million	% of Total Value
Japan	18,927	9.1%	\$1,868.8	17.6%
Canada	16,201	7.8%	\$1,332.8	12.6%
United Kingdom	21,769	10.5%	\$993.6	9.4%
South Korea	15,012	7.2%	\$854.6	8.1%
Israel	7,683	3.7%	\$385.5	3.6%
Italy	6,670	3.2%	\$380.8	3.6%
Singapore	10,695	5.1%	\$380.4	3.6%
Germany	8,008	3.8%	\$374.5	3.5%
United Arab Emirates	10,035	4.8%	\$329.3	3.1%
Spain	5,922	2.8%	\$303.5	2.9%
Taiwan	6,040	2.9%	\$290.5	2.7%
Saudi Arabia	3,819	1.8%	\$237.8	2.2%
Australia	7,043	3.4%	\$180.7	1.7%
Mexico	8,589	4.1%	\$172.8	1.6%
Poland	4,583	2.2%	\$162.3	1.5%
Top 15 Total	150,996		\$8,247.9	
Top 15 Total/ Grand Total		72.5%		77.9%
Grand Total	208,313		\$10,594.5	

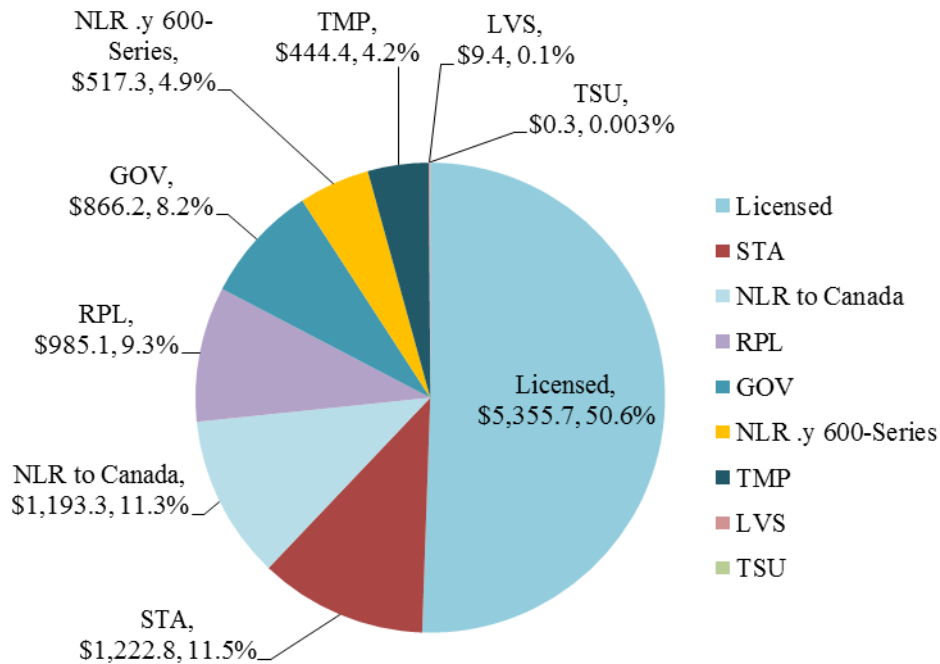
Source: Automated Export System, July 2017

Of the \$10.6 billion in U.S. exports of 600-series items in the First ECR transition rule under BIS jurisdiction, licensed exports totaled \$5.4 billion (50.6% of the total); Strategic Trade Authorization (STA) totaled \$1.2 billion (11.5%); and No License Required (NLR) to Canada totaled \$1.2 billion (11.3%).

**U.S. Exports of 600-Series and 9x515 Items
by BIS License Type**

October 15, 2013 to March 31, 2017

\$million



Source: Automated Export System, July 2017

BIS License Exceptions:

STA: Strategic Trade Authorization

NLR: No License Required

RPL: Servicing and replacement of parts and equipment

GOV: Governments, international organizations, international inspections under the Chemical Weapons Convention, and the International Space Station

TMP: Temporary imports, exports, reexports, and transfers (in-country)

LVS: Shipments of limited value

TSU: Technology and software-unrestricted